

PrimeLink™ C9065 Printer

Simply professional. Amazingly flexible.



Versatility that satisfies diverse needs

Your teams require the flexibility and productive workflow of a multifunction device. Your graphics, creative and production teams want a higher level of quality and finishing. However, purchasing machines to satisfy each requirement may become costly and space consuming. PrimeLink C9065 Printer can be your "all-in-one" solution that flexibly meets the demands of professionals while offering a multitude of functions for the efficiency and versatility of your office work environment.

OFFERING VERSATILITY WITH VARIOUS FEATURES

PrimeLink C9065 Printer will assist your professional requirements with a variety of features that support creativity and innovation of your professional work. While offering functions such as density uniformity / alignment adjustments and colour calibration, its variety of finishing options and efficiency boosting workflows will keep jobs moving with less wasted time and materials.

To cater your office work needs, this versatile printer also allows you to print, copy and scan - including automatic sending of scanned data to your PC or sending by e-mail or printing from USB. It can even print from virtually any smart phone or tablet. That's how the PrimeLink C9065 Printer will boost any team's efficiency.



EQUIPPED WITH FEATURES TO ACCELERATE YOUR NEW BUSINESS POTENTIAL

- Productive print speed – prints up to 65 ppm in colour and up to 70 ppm in black-and-white. And with easy set-up and automated workflows, you can handle quick turnarounds in style.
- Media versatility – both coated and uncoated stocks up to 350 gsm. Supporting a variety of paper sizes including postcards and banners.
- Wider finishing capabilities – A variety of inline finishing options offer a professional polish to presentation materials, brochures, reports and documents that need an extra appeal. Finishers include numerous functions like stapling, punching, folding, creasing, full bleed trimming and booklet making.
- Workflow innovation – integration with FreeFlow Digital Workflow Collection and partner solutions that deliver workflow productivity, innovation and automation, as well as variable data solutions designed to meet customer demand for personalisation and business growth.

PrimeLink C9065 Printer QUICK FACTS

Speed

Up to 65 ppm colour and 70 ppm black-and-white

Single-pass scanner

Up to 270 images per minute (ipm)

Printing resolution

2400 × 2400 dpi

Toner

Fuji Xerox Emulsion Aggregation (EA) Toner with ultra-low melt technology

Media weights

Up to 350 gsm and up to 256 gsm* for auto duplexing

Media sizes

Up to 330 × 660 mm

* For 221 to 256 gsm, print results are not fully assured.

For professionals Features that expands the creativity and efficiency of professional production

EXTRA EDGE IN SPEED AND IMAGE QUALITY

PrimeLink C9065 Printer comes standard with a print server, which is ideal for professional and quick-print environments as well as corporate offices in which speed and ease-of-use are needed to boost productivity and efficiency.

SUPPORT FOR BANNER PRINTING

You can print on larger media with PrimeLink C9065 Printer, which is capable of handling paper sizes up to 660 mm in length.

WIDE RANGE OF OPTIONS FOR A WIDER VARIETY OF FINISHED JOBS

As the number of incoming jobs grow from a handful to dozens or even hundreds a day and as they come in more shapes and sizes, you just cannot afford to have manual labour handling each job. PrimeLink C9065 Printer offers a wider variety of finishing options to provide automation that keeps you productive whilst saving time and reducing costly errors.



Offering a myriad of standard functions to support your creativity and work efficiency.

INNOVATION COMES STANDARD

Vibrant colour and incredible detail

With our 2400 x 2400 dpi printing resolution, images are rich with crisp text so your output will always impress.

Excellent image quality

Our EA Low Melt Toner technology is chemically grown, so the small, consistent particles produce impeccable quality with smooth transitions and an offset-like finish.

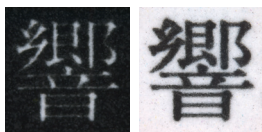
CLEAR PRINTING OF SMALL TEXT AND THIN LINES

Edge enhancement

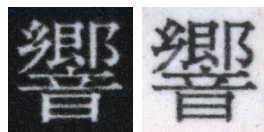
Jaggedness, which tends to occur with mid-tone texts and lines, is suppressed by screen processing on contours, reproducing crisp text and lines.

Adjust Invert Text/Line Weight

PrimeLink C9065 Printer mitigates crushing of white texts and fattening of black texts when the texts are small. Several levels of toner amount are available for selection for applying to the contour, so that you can set a desirable balance for improved text readability.



Adjust Invert Text/Line Weight: Off



Adjust Invert Text/Line Weight: On

SELECTING DIFFERENT SCREENS FOR INDIVIDUAL OBJECTS FOR OPTIMUM IMAGE QUALITY

Various screens can be chosen according to the objects your use, such as texts and photos.

TRUE Adobe® PostScript® 3™ CERTIFICATION AND THE LATEST Adobe® PDF Print Engine*

These features plus blazing speeds means your creativity is never restricted.

* Adobe® PDF Print Engine is Optional.



Adobe PostScript 3™



Adobe PDF Print Engine 4

CONTROL QUALITY AND SAVE TIME WITH ADVANCED SIQA*

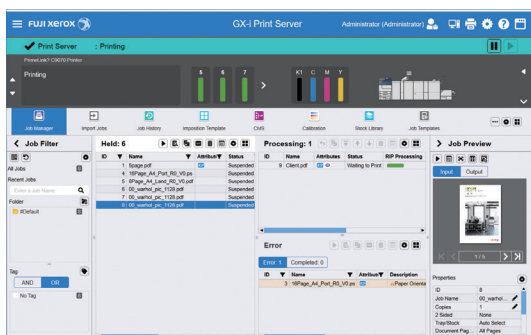
Advanced SIQA can save you from the hassle of adjusting alignment, density uniformity, tonal reproduction curve or transfer voltage. By simply scanning the printed charts, advanced SIQA will optimise the adjustment values. With advanced SIQA, operators no longer have to go through the time-consuming and iterative procedure of having to print, measure and manually adjust individual settings. PrimeLink C9065 Printer reduces waste and a considerable amount of operator intervention while consistently meeting image quality expectations.

* Simple Image Quality Adjustment.

GX-i Print Server for the PrimeLink C9065 Printer

Superb speed and image quality

Featuring a simple user interface, versatile media handling and automated RGB colour correction, this GX-i Print Server employs the developed architecture by Fuji Xerox to reduce RIP load and a RIP Accelerator Board to maintain image quality through high-speed, lossless compression.



PrimeLink C9065 Printer Functions & Specifications

Basic Specifications / Print Function

Item	Description
	PrimeLink C9065 Printer
Colour Capability	Full Colour
Printing Resolution	2400 x 2400 dpi
Continuous Print Speed ¹	A4 B/W: 70 ppm Colour: 65 ppm A3 B/W: 35 ppm Colour: 33 ppm
Paper Size ²	Tray 1 Standard Size: Max A3, Min A5 Custom Size: 140 x 182 mm to 330 x 458 mm
	Tray 2 Standard Size: Max A3, Min A5 Custom Size: 140 x 182 mm to 297 x 432 mm
	Tray 3, 4 Standard Size: A4, JIS B5
	Bypass Tray Standard Size: Max A3, Min A6 Custom Size: 100 x 148 mm to 330 x 660 mm
Paper Weight	Tray 1, 2, 3, 4 60 to 256 gsm Bypass Tray 60 to 350 gsm ³
Paper Tray Capacity ⁴	Standard 500 sheets x 2 -tray + 870 sheets + 1140 sheets + Bypass Tray 250 sheets
	Optional HCF B1: 2000 sheets x 1 -tray High Capacity Feeder B1-S: 2000 sheets x 1 -tray High Capacity Feeder C1-DS: 2000 sheets x 2 -tray
	Max 7260 sheets [Standard + High Capacity Feeder C1-DS]
Output Tray Capacity ^{4,5}	500 sheets (A3)
Power Supply	AC220-240 V +/- 10 %, 10 A, 50/60 Hz common
Maximum Power Consumption ⁶	2.4 kW
Dimensions ⁷	W 1022 x D 804 x H 1392 mm
Weight ⁸	232 kg

*1: When continuously printing a single document. 60 to 128 gsm, uncoated paper. Print speed may be reduced depending on conditions of output data, on whether auto image quality adjustment is performed, on whether the job includes a mixture of paper sizes and types, and other reasons.

*2: Image loss width: Lead edge 4.0 mm, Trail edge 4.0 mm, Front 3.5 mm, Rear 3.5 mm.

*3: Banner Printing 60 to 220 gsm. *4: 80 gsm paper. *5: Offset Catch Tray. *6: Main unit with Offset Catch Tray.

*7: Includes main unit and Large Size U1 panel. Excludes output tray and print server. With the Bypass Tray closed.

*8: Includes main unit, photoreceptor, and Large Size U1 panel. Excludes output tray, print server, paper, and toner.

Scan Function

Item	Description
Scan Resolution	600 x 600 dpi, 400 x 400 dpi, 300 x 300 dpi, 200 x 200 dpi
Scan Speed	Same as the "Scan Speed" for the Duplex Automatic Document Feeder
Scanning Method	Store to folder (TWAIN Interface support), Scan to PC (FTP, SMB), Scan to e-mail

Copy Function

Item	Description
Scan Resolution	600 x 600 dpi
Printing Resolution	2400 x 2400 dpi (High Resolution Photo) 600 x 600 dpi (Text / Text-Photo / Photo / Map)
First Copy Output Time	B/W 4.1 seconds or less (A4 / Monochrome priority mode)
	Colour 6.5 seconds or less (A4 / Colour priority mode)

Print Server [GX-i Print Server for the PrimeLink C9065 Printer]

Item	Description
Type	Main unit built-in type
CPU	Intel® Core™ i3-7101E Processor (3.9 GHz)
Storage device	Hard disk: 1 TB
Memory capacity	16 GB (Max: 16 GB)
Server Operation System	Windows 10 IoT Enterprise (64bit)
Page Description Language	Adobe® PostScript® 3™, PDF/VT-1, PDF/VT-2, PPML, VIPP ¹
Print Data Format	PS, PDF1.7, PDF/X-1a, PDF/X-3, PDF/X-4, PDF/X-5, EPS, TIFF, JPEG
Supported Operating System	Windows 10 (32bit), Windows 10 (64bit), Windows 8.1 (32bit) Windows 8.1 (64bit), Windows 7 (32bit) [Service Pack 1] Windows 7 (64bit) [Service Pack 1] Windows Server 2019 (64bit), Windows Server 2016 (64bit) Windows Server 2012 R2 (64bit), Windows Server 2012 (64bit) Windows Server 2008 R2 (64bit) [Service Pack 1] Windows Server 2008 (32bit) [Service Pack 2] Windows Server 2008 (64bit) [Service Pack 2] macOS 10.14 Mojave, macOS 10.13 High Sierra macOS 10.12 Sierra, OS X 10.11 El Capitan, OS X 10.10 Yosemite
Interface	Ethernet: 1000BASE-T / 100BASE-TX / 10BASE-T x 2 USB: USB3.0 x 4, USB2.0 x 2
Network Protocol	TCP/IP (lpd/FTP/IPP ² /SMB/JDF/HTTP), AppleTalk ³ , Bonjour
Power Supply	AC100 - 240 V +/- 10 %, 2.5 A (100 V) / 1.1 A (240 V), 50/60 Hz common
Maximum Power Consumption	0.2 kW
Dimensions	W 290 x D 135 x H 318 mm
Weight	6.5 kg

Model: A-SV10

*1: Used with optional software FreeFlow VI Compose. *2: Used to work with FreeFlow Digital Workflow Collection.

*3: AppleTalk is not supported by Mac OS X 10.6 Snow Leopard or later.

Duplex Automatic Document Feeder C1-PC

Item	Description
Original Size / Paper Weight	Max A3, Min A6 ¹ 38 to 200 gsm (In Duplex: 50 to 200 gsm)
Capacity ²	250 sheets
Scan Speed ³	Copy B/W: 80 sheets/minute Colour: 75 sheets/minute
	Scan B/W: 135 sheets/minute, Colour: 135 sheets/minute (1 pass, 2 sided scanning: B/W: 270 ppm, Colour: 270 ppm) [Fuji Xerox Standard Paper (A4), 200 dpi, to Folder.]

*1: The minimum custom size is 84 x 140 mm. *2: 64 gsm paper.

*3: The scanning speed varies depending on the documents.